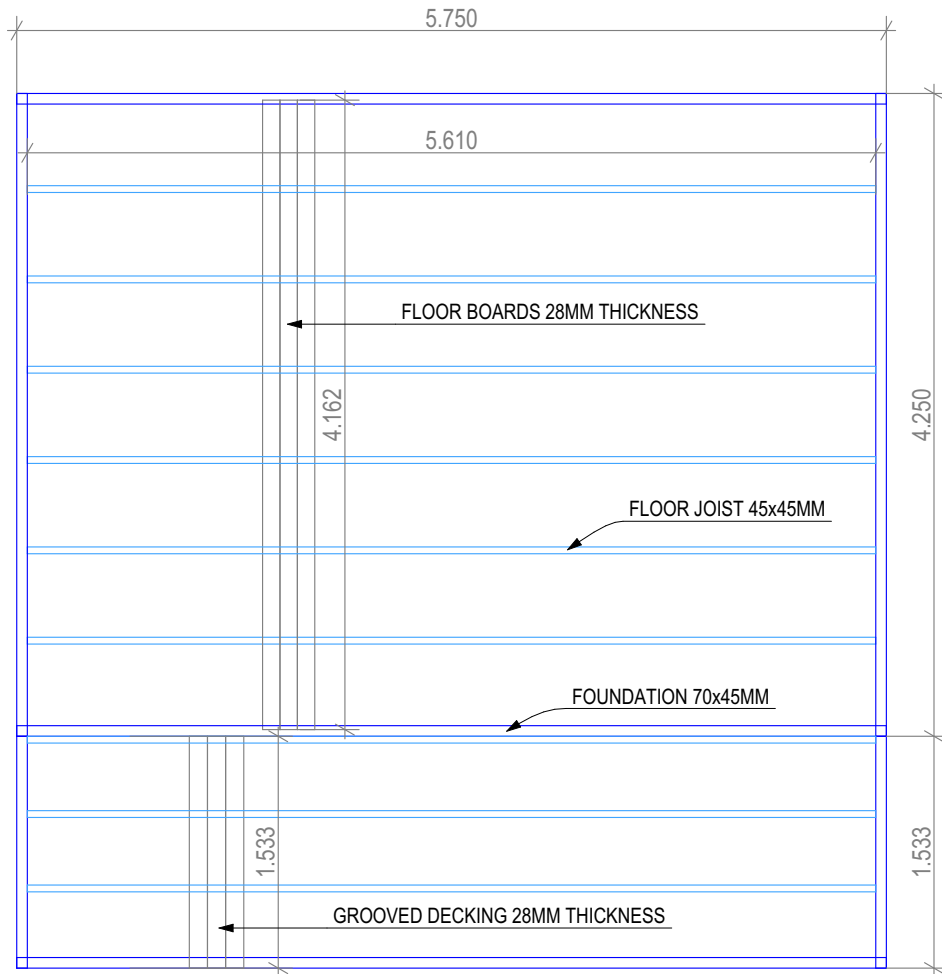




# CORNWALL 5959-45 DG

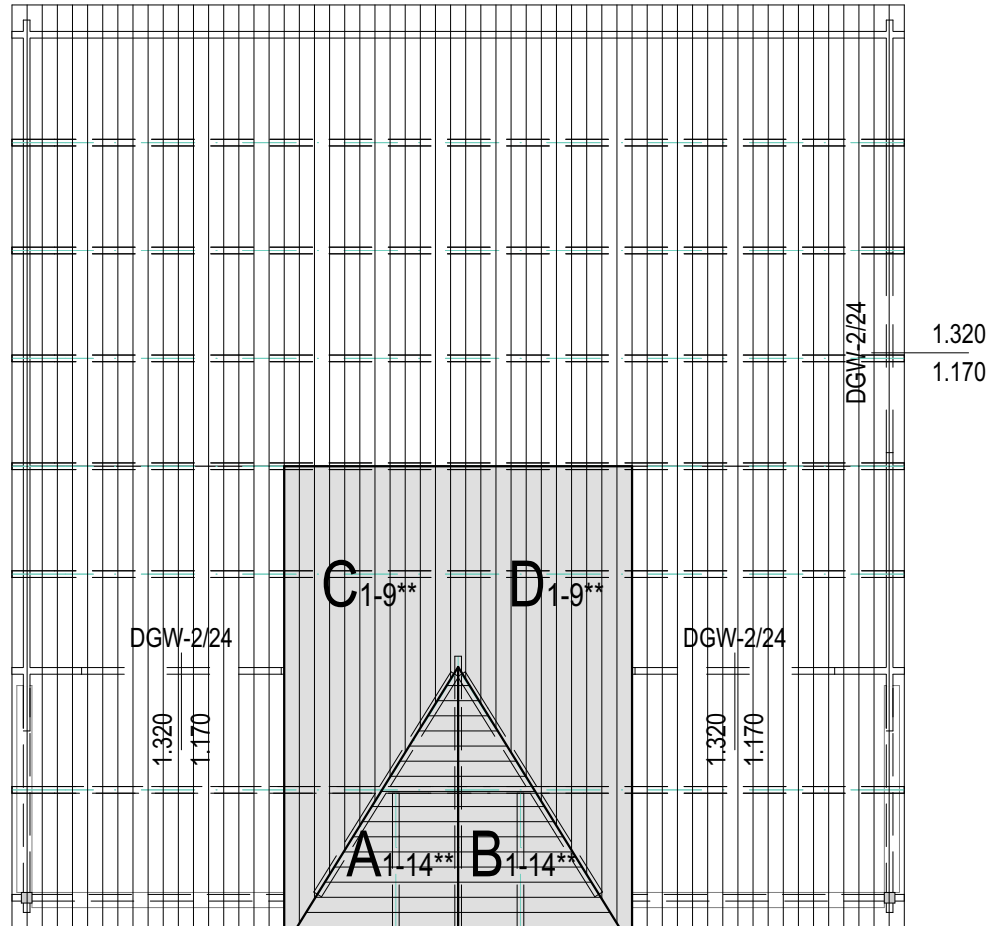
SIZE (m): 5.9 x 5.9  
SIDE WALL HEIGHT : 2405 mm  
RIDGE HEIGHT: 3250 mm  
WALL LOG: 45 mm  
**STANDARD**



Floor joist plan

# CORNWALL 5959-45 DG

SIZE (m): 5.9 x 5.9  
SIDE WALL HEIGHT : 2405 mm  
RIDGE HEIGHT: 3250 mm  
WALL LOG: 45 mm  
**STANDARD**

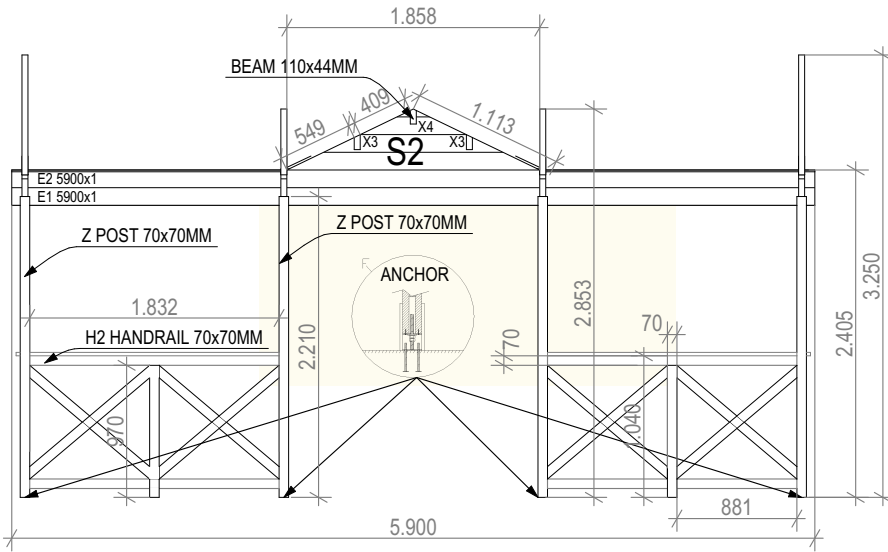


Roof board plan

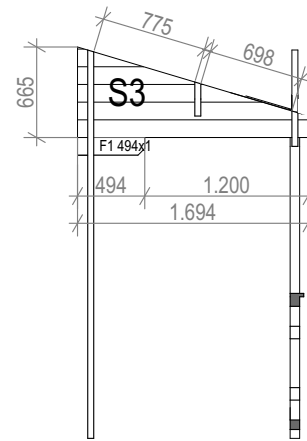


# CORNWALL 5959-45 DG

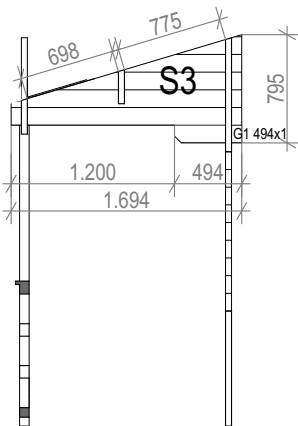
SIZE (m): 5.9 x 5.9  
 SIDE WALL HEIGHT: 2405 mm  
 RIDGE HEIGHT: 3250 mm  
 WALL LOG: 45 mm  
**STANDARD**



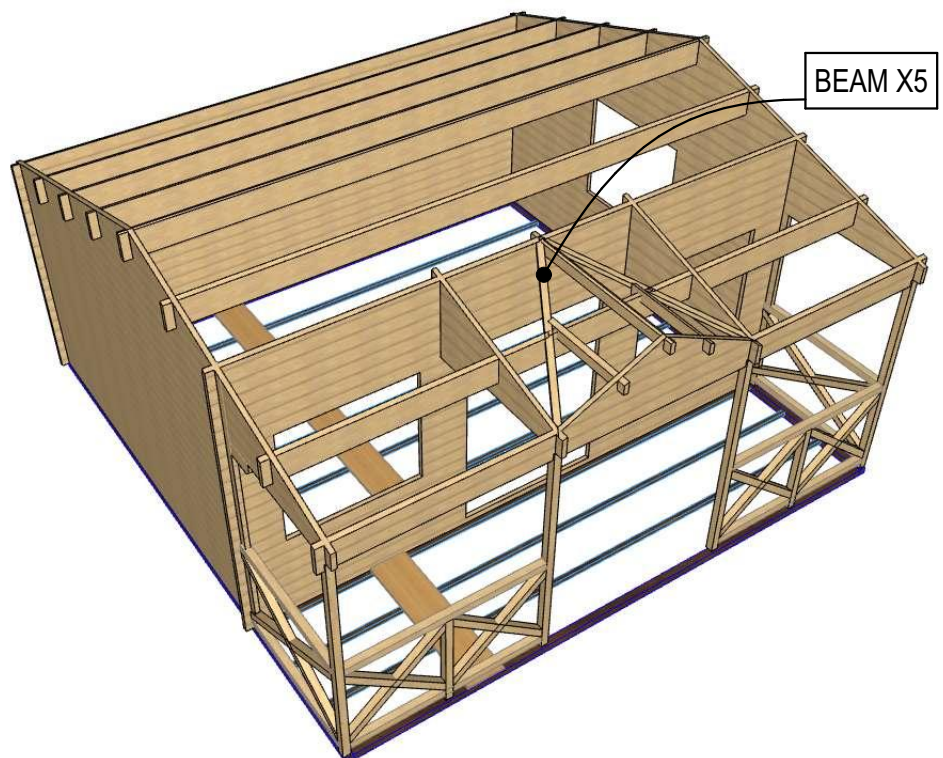
Elevation 5



Elevation 6



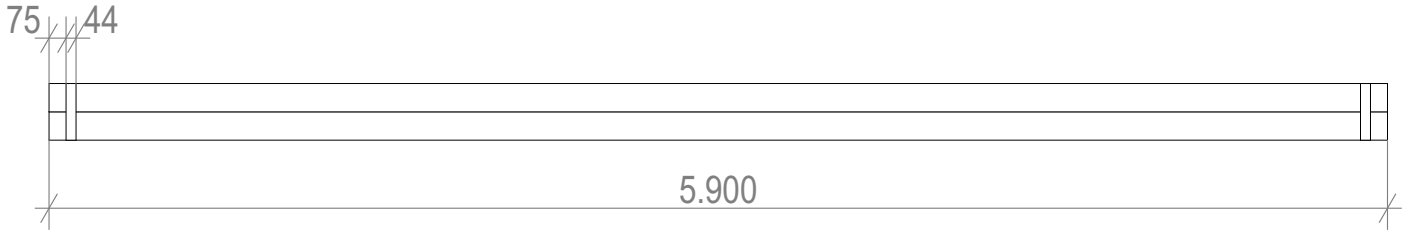
Elevation 7



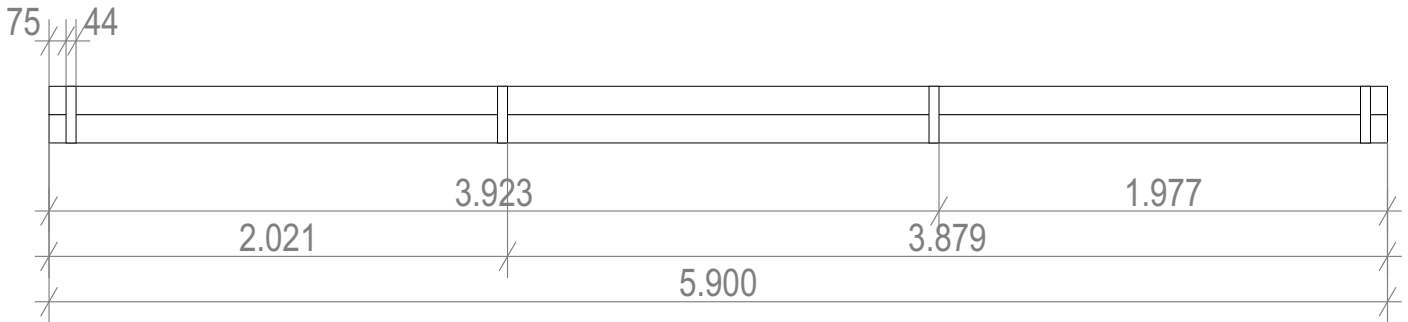
Sketch

# CORNWALL 5959-45 DG

SIZE (m): 5.9 x 5.9  
SIDE WALL HEIGHT : 2405 mm  
RIDGE HEIGHT: 3250 mm  
WALL LOG: 45 mm  
**STANDARD**



Beam X1 250x44mm x 5 pcs.



Beam X2 250x44mm x 1 pcs.